

WHAT IS

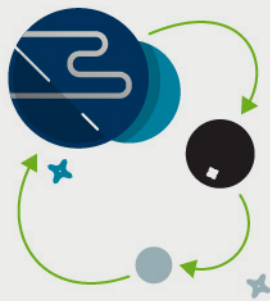
ASSET MANAGEMENT

& WHY DO WE DO IT?

At MnDOT, asset management means transportation assets are managed effectively based on risk and return on investment, using the best available information and tools. This means:



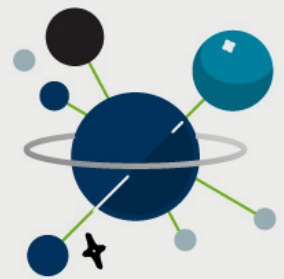
Collecting and maintaining reliable information on our assets.



Using data effectively to strategically and proactively manage assets.



Investing in programs and tools to use the data effectively.



Ensuring everyone has the skills needed to fulfill their asset management duties and responsibilities.

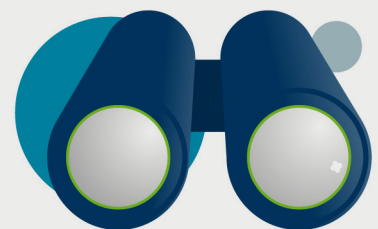
You can help by:



Entering data as accurately as possible.



Providing data on a timely basis.



Looking for opportunities to be proactive in managing assets.